

## **Brookleigh Rd between Oldfield Rd and Hamsterly Rd**

**March 31, 2019 To April 05, 2019**



The data presented here is for information purposes only and should not be considered authoritative for construction, geotechnical, engineering, navigational, legal, or other site-specific uses. The information shared is owned by the Transportation Division of the Engineering Department at the District of Saanich. Accuracy is not guaranteed.

Start Date: 1-Apr-19  
 Start Time: 1:00  
 Station ID: C0008-01

**Location 1: Brookleigh Rd between Oldfield Rd and Hamsterly Rd**

Note: Oldfield Rd and Hamsterly Rd

DATE:	April 1, 2019		April 2, 2019		April 3, 2019		April 4, 2019		April 5, 2019		WK AVG		WK AVG	HOURLY
	MON		TUE		WED		THURS		FRI		WB		CH 1+2	%
Time:	EB	WB	EB	WB	EB	WB	EB	WB	EB	WB	EB	WB		
12-1 AM					0	0	1	1	2	0	1	0	1	0.1%
1-2 AM					1	1	2	1	0	0	1	1	2	0.1%
2-3 AM					0	0	0	0	0	0	0	0	0	0.0%
3-4 AM					2	2	2	0	2	0	2	1	3	0.1%
4-5 AM					1	1	0	0	0	0	0	0	1	0.0%
5-6 AM					5	2	6	1	3	2	5	2	6	0.3%
6-7 AM					17	9	16	6	20	10	18	8	26	1.4%
7-8 AM					46	43	47	53	61	51	51	49	100	5.3%
8-9 AM					92	75	88	73	84	67	88	72	160	8.4%
9-10 AM					65	78	65	57	66	59	65	65	130	6.8%
10-11 AM					70	62	49	52	62	69	60	61	121	6.4%
11-12 PM					77	75	65	56	64	70	69	67	136	7.1%
12-1 PM					73	79	57	54	48	78	59	70	130	6.8%
1-2 PM					51	60	54	63	60	71	55	65	120	6.3%
2-3 PM					54	86	63	81	65	94	61	87	148	7.8%
3-4 PM					78	115	74	102	95	103	82	107	189	9.9%
4-5 PM					87	125	73	105	97	136	86	122	208	10.9%
5-6 PM					72	85	75	79	72	105	73	90	163	8.6%
6-7 PM					51	50	33	38	53	56	46	48	94	4.9%
7-8 PM					33	36	31	27	31	47	32	37	68	3.6%
8-9 PM					18	30	18	19	16	30	17	26	44	2.3%
9-10 PM					12	14	9	21	12	13	11	16	27	1.4%
10-11 PM					6	12	4	10	5	12	5	11	16	0.9%
11-12 AM					5	6	3	8	1	4	3	6	9	0.5%
<b>LANES</b>					<b>916</b>	<b>1046</b>	<b>835</b>	<b>907</b>	<b>919</b>	<b>1077</b>	<b>890</b>	<b>1010</b>	<b>1900</b>	<b>100.0%</b>
<b>TOTAL</b>					<b>1962</b>		<b>1742</b>		<b>1996</b>		<b>1900</b>			
	MON		TUE		WED		THURS		FRI		WK AVG			

PEAK HOUR					TOTAL VEHICALS-PEAK PERIODS		2 HOUR PEAK INTERVALS				
MAX. 7 - 9 am PEAK HOUR	160	⇒	8.4%	between 8-9 AM	896	⇒	6 HR TOTAL	<b>2 HR AM (7 - 9 AM)</b>			
MAX. 7 - 11 am PEAK HOUR	160	⇒	8.4%	between 8-9 AM	630	⇒	4 HR TOTAL	VEH / HR	VEH / 2HR	2 HR %	
MAX. 11 am - 1 pm PEAK HOUR	136	⇒	7.1%	between 11-12 PM				7-8 AM	100	260	13.7%
MAX. 11 am - 3 pm PEAK HOUR	148	⇒	7.8%	between 2-3 PM				8-9 AM	160		
MAX. 4 - 6 pm PEAK HOUR	208	⇒	10.9%	between 4-5 PM				<b>2 HR NOON (11 - 1 PM)</b>			
MAX. 3 - 6 pm PEAK HOUR	208	⇒	10.9%	between 4-5 PM				VEH / HR	VEH / 2HR	2 HR %	
					2.12	⇒	6-24 HR FACT.	11-12 PM	136	265	14.0%
					3.01	⇒	4-24 HR FACT.	12-1 PM	130		
								<b>2 HR PM (4 - 6 PM)</b>			
								VEH / HR	VEH / 2HR	2 HR %	
								4-5 PM	208	370	19.5%
								5-6 PM	163		

# Brookleigh Rd between Oldfield Rd and Hamsterly Rd

Westbound

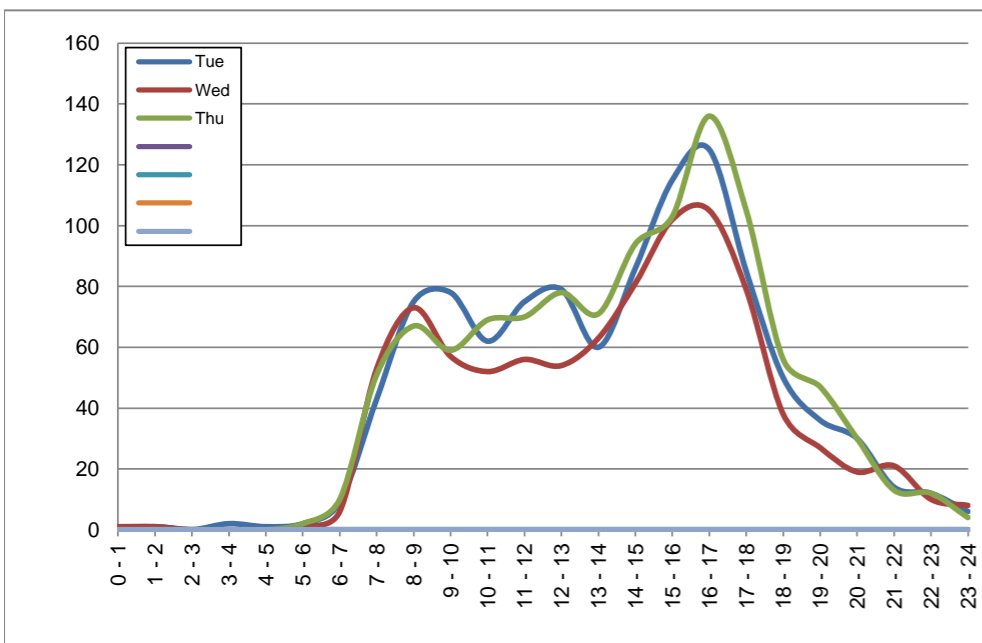
April 2, 2019 to April 4, 2019

## Hourly Volumes

Time Period	Tue	Wed	Thu			
	Apr 2	Apr 3	Apr 4			
0 - 1	0	1	0			
1 - 2	1	1	0			
2 - 3	0	0	0			
3 - 4	2	0	0			
4 - 5	1	0	0			
5 - 6	2	1	2			
6 - 7	9	6	10			
7 - 8	43	53	51			
8 - 9	75	73	67			
9 - 10	78	57	59			
10 - 11	62	52	69			
11 - 12	75	56	70			
12 - 13	79	54	78			
13 - 14	60	63	71			
14 - 15	86	81	94			
15 - 16	115	102	103			
16 - 17	125	105	136			
17 - 18	85	79	105			
18 - 19	50	38	56			
19 - 20	36	27	47			
20 - 21	30	19	30			
21 - 22	14	21	13			
22 - 23	12	10	12			
23 - 24	6	8	4			
<b>Day Total</b>	<b>1046</b>	<b>907</b>	<b>1077</b>			

## 15-Minute Volumes

Time Start	Tue	Wed	Thu				Time Start	Tue	Wed	Thu			
	Apr 2	Apr 3	Apr 4					Apr 2	Apr 3	Apr 4			
0:00	0	0	0				12:00	23	16	23			
0:15	0	1	0				12:15	16	16	19			
0:30	0	0	0				12:30	20	7	15			
0:45	0	0	0				12:45	20	15	21			
1:00	0	1	0				13:00	12	12	14			
1:15	1	0	0				13:15	18	15	21			
1:30	0	0	0				13:30	11	20	23			
1:45	0	0	0				13:45	19	16	13			
2:00	0	0	0				14:00	22	25	29			
2:15	0	0	0				14:15	19	15	24			
2:30	0	0	0				14:30	23	21	20			
2:45	0	0	0				14:45	22	20	21			
3:00	0	0	0				15:00	17	22	19			
3:15	1	0	0				15:15	30	32	35			
3:30	0	0	0				15:30	25	26	26			
3:45	1	0	0				15:45	43	22	23			
4:00	0	0	0				16:00	29	30	33			
4:15	0	0	0				16:15	38	26	50			
4:30	1	0	0				16:30	30	21	33			
4:45	0	0	0				16:45	28	28	20			
5:00	0	0	0				17:00	23	19	18			
5:15	0	0	0				17:15	26	22	27			
5:30	0	0	2				17:30	24	27	37			
5:45	2	1	0				17:45	12	11	23			
6:00	1	0	1				18:00	13	7	12			
6:15	2	1	1				18:15	12	11	13			
6:30	3	0	3				18:30	14	10	11			
6:45	3	5	5				18:45	11	10	20			
7:00	5	3	4				19:00	10	8	14			
7:15	4	9	11				19:15	14	6	12			
7:30	13	14	12				19:30	7	6	13			
7:45	21	27	24				19:45	5	7	8			
8:00	11	18	15				20:00	15	5	11			
8:15	18	13	19				20:15	6	7	10			
8:30	19	17	11				20:30	5	3	5			
8:45	27	25	22				20:45	4	4	4			
9:00	27	17	19				21:00	7	6	3			
9:15	11	13	16				21:15	5	6	3			
9:30	21	15	11				21:30	1	2	2			
9:45	19	12	13				21:45	1	7	5			
10:00	14	12	15				22:00	6	6	5			
10:15	12	14	11				22:15	2	1	0			
10:30	17	9	26				22:30	2	1	3			
10:45	19	17	17				22:45	2	2	4			
11:00	19	12	21				23:00	1	2	2			
11:15	29	15	14				23:15	2	1	1			
11:30	12	13	13				23:30	3	4	0			
11:45	15	16	22				23:45	0	1	1			



Site notes:

# Brookleigh Rd between Oldfield Rd and Hamsterly Rd

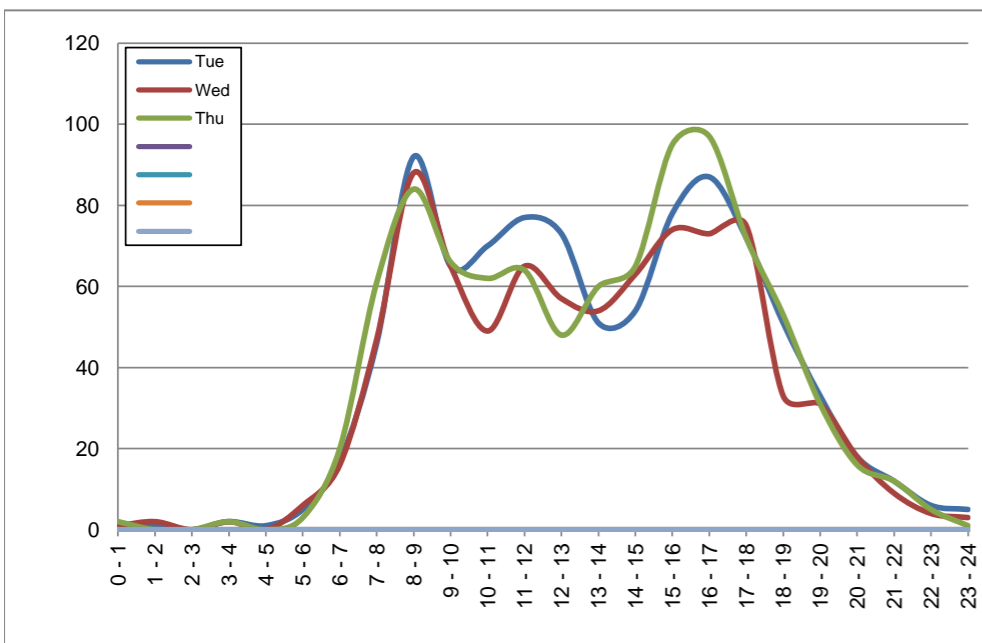
Eastbound  
April 2, 2019 to April 4, 2019

## Hourly Volumes

Time Period	Tue	Wed	Thu			
	Apr 2	Apr 3	Apr 4			
0 - 1	0	1	2			
1 - 2	1	2	0			
2 - 3	0	0	0			
3 - 4	2	2	2			
4 - 5	1	0	0			
5 - 6	5	6	3			
6 - 7	17	16	20			
7 - 8	46	47	61			
8 - 9	92	88	84			
9 - 10	65	65	66			
10 - 11	70	49	62			
11 - 12	77	65	64			
12 - 13	73	57	48			
13 - 14	51	54	60			
14 - 15	54	63	65			
15 - 16	78	74	95			
16 - 17	87	73	97			
17 - 18	72	75	72			
18 - 19	51	33	53			
19 - 20	33	31	31			
20 - 21	18	18	16			
21 - 22	12	9	12			
22 - 23	6	4	5			
23 - 24	5	3	1			
<b>Day Total</b>	<b>916</b>	<b>835</b>	<b>919</b>			

## 15-Minute Volumes

Time Start	Tue	Wed	Thu				Time Start	Tue	Wed	Thu			
	Apr 2	Apr 3	Apr 4					Apr 2	Apr 3	Apr 4			
0:00	0	0	0				12:00	16	17	11			
0:15	0	0	0				12:15	19	10	11			
0:30	0	0	1				12:30	22	8	15			
0:45	0	1	1				12:45	16	22	11			
1:00	1	0	0				13:00	5	15	17			
1:15	0	2	0				13:15	21	13	15			
1:30	0	0	0				13:30	11	15	14			
1:45	0	0	0				13:45	14	11	14			
2:00	0	0	0				14:00	15	16	15			
2:15	0	0	0				14:15	8	12	13			
2:30	0	0	0				14:30	21	15	20			
2:45	0	0	0				14:45	10	20	17			
3:00	1	1	1				15:00	13	17	25			
3:15	0	0	0				15:15	17	16	31			
3:30	0	1	0				15:30	31	28	20			
3:45	1	0	1				15:45	17	13	19			
4:00	1	0	0				16:00	18	26	22			
4:15	0	0	0				16:15	24	18	23			
4:30	0	0	0				16:30	25	15	25			
4:45	0	0	0				16:45	20	14	27			
5:00	1	0	0				17:00	32	29	32			
5:15	1	1	0				17:15	15	23	12			
5:30	0	3	0				17:30	13	8	10			
5:45	3	2	3				17:45	12	15	18			
6:00	3	1	2				18:00	19	14	19			
6:15	2	5	5				18:15	14	9	15			
6:30	8	7	8				18:30	8	7	7			
6:45	4	3	5				18:45	10	3	12			
7:00	11	9	13				19:00	6	6	10			
7:15	7	9	17				19:15	9	8	7			
7:30	11	13	10				19:30	10	10	7			
7:45	17	16	21				19:45	8	7	7			
8:00	17	18	15				20:00	6	6	6			
8:15	27	15	22				20:15	3	6	3			
8:30	28	31	26				20:30	4	0	3			
8:45	20	24	21				20:45	5	6	4			
9:00	12	18	22				21:00	4	1	4			
9:15	14	14	16				21:15	7	4	4			
9:30	23	19	15				21:30	0	2	2			
9:45	16	14	13				21:45	1	2	2			
10:00	13	16	11				22:00	1	2	2			
10:15	14	8	17				22:15	2	0	1			
10:30	29	14	14				22:30	2	1	1			
10:45	14	11	20				22:45	1	1	1			
11:00	21	15	15				23:00	1	0	0			
11:15	21	14	14				23:15	1	2	0			
11:30	17	15	15				23:30	0	0	0			
11:45	18	21	20				23:45	3	1	1			



Site notes:

# Vehicle Speed Summary

Saanich Engineering Department

Count Id: C0008-01

Filename: Brookleigh Rd between Oldfield Rd and Hamsterly Rd-Apr-2019.xlsx.xlsm

**Location:** Brookleigh Rd between Oldfield Rd and Hamsterly Rd

Note: Oldfield Rd and Hamsterly Rd

Direction: **East-West**

Dates: **March 31, 2019 To April 05, 2019**

*Filtered data*

AVG. SPEED	<b>32 mph</b>	<b>52 km/h</b>
50 % SPEED	<b>33 mph</b>	<b>53 km/h</b>
85 % SPEED	<b>37 mph</b>	<b>60 km/h</b>
95 % SPEED	<b>40 mph</b>	<b>65 km/h</b>

Location Map



**Brookleigh Rd between Oldfield Rd and Hamsterly Rd**

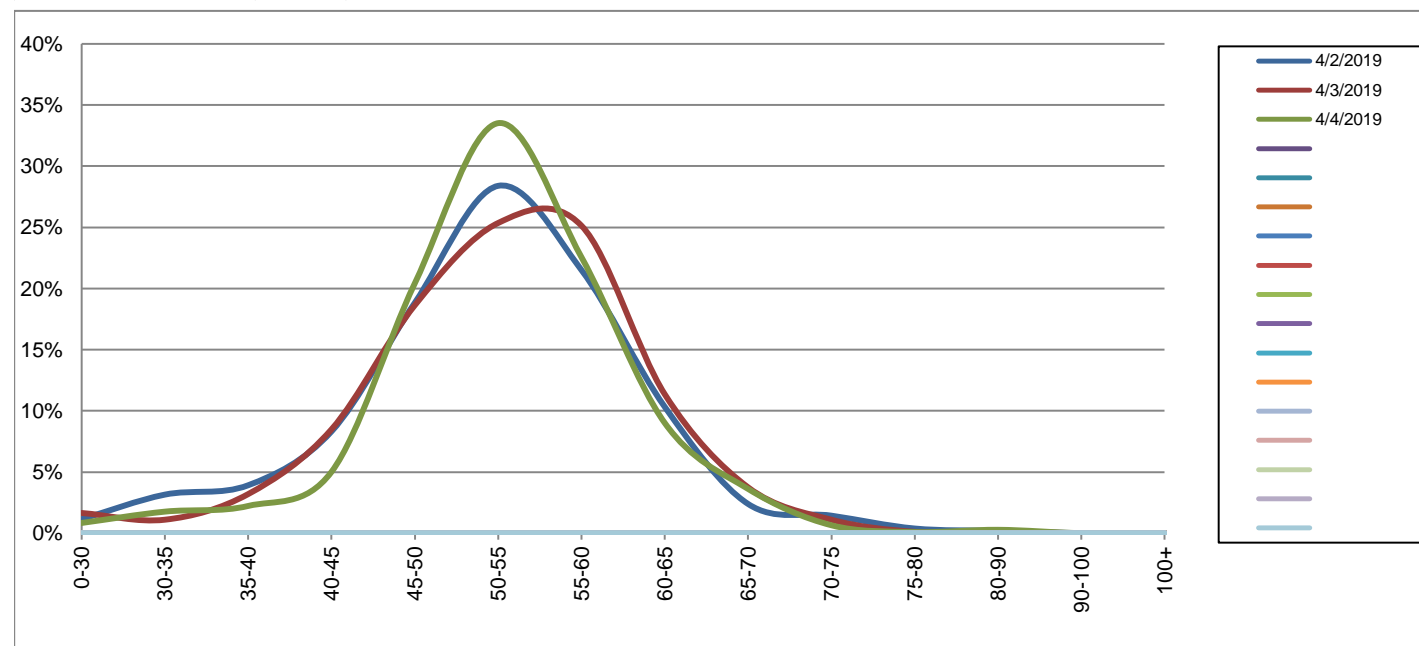
Westbound

April 2, 2019 to April 4, 2019

Daily Speed Bin Percentages															Daily Speed Bin Volumes														Total	Avg.
Bin #	1	2	3	4	5	6	7	8	9	10	11	12	13	14	1	2	3	4	5	6	7	8	9	10	11	12	13	14	Volume	Speed
Bin Speeds	0-30	30-35	35-40	40-45	45-50	50-55	55-60	60-65	65-70	70-75	75-80	80-90	90-100	100+	0-30	30-35	35-40	40-45	45-50	50-55	55-60	60-65	65-70	70-75	75-80	80-90	90-100	100+		
4/2/2019	1.1%	3.2%	3.9%	8.3%	18.8%	28.4%	21.5%	10.3%	2.4%	1.4%	0.4%	0.2%	0.0%	0.0%	12	33	41	87	197	297	225	108	25	15	4	2	0	0	1046	52
4/3/2019	1.7%	1.1%	3.2%	8.5%	18.6%	25.4%	25.1%	11.4%	3.7%	1.1%	0.1%	0.1%	0.0%	0.0%	15	10	29	77	169	230	228	103	34	10	1	1	0	0	907	53
4/4/2019	0.8%	1.8%	2.2%	5.0%	20.4%	33.5%	22.6%	9.0%	3.6%	0.6%	0.1%	0.3%	0.0%	0.0%	9	19	24	54	220	361	243	97	39	7	1	3	0	0	1077	53
<b>Total</b>	1.2%	2.0%	3.1%	7.2%	19.3%	29.3%	23.0%	10.2%	3.2%	1.1%	0.2%	0.2%	0.0%	0.0%	36	62	94	218	586	888	696	308	98	32	6	6	0	0	3030	52

**Speed Data Summary**

Bin #	1	2	3	4	5	6	7	8	9	10	11	12	13	14	Total
Bin Speeds	0-30	30-35	35-40	40-45	45-50	50-55	55-60	60-65	65-70	70-75	75-80	80-90	90-100	100+	
Survey Total	36	62	94	218	586	888	696	308	98	32	6	6	0	0	3030
% Total	1.2%	2.0%	3.1%	7.2%	19.3%	29.3%	23.0%	10.2%	3.2%	1.1%	0.2%	0.2%	0.0%	0.0%	100%
Accumulated %	1.2%	3.2%	6.3%	13.5%	32.9%	62.2%	85.1%	95.3%	98.5%	99.6%	99.8%	100.0%	100.0%	100%	
Inverse Accum. %	98.8%	96.8%	93.7%	86.5%	67.1%	37.8%	14.9%	4.7%	1.5%	0.4%	0.2%	0.0%	0.0%	0.0%	
Average Speed	52 KM/H														



Site notes:

**Brookleigh Rd between Oldfield Rd and Hamsterly Rd**

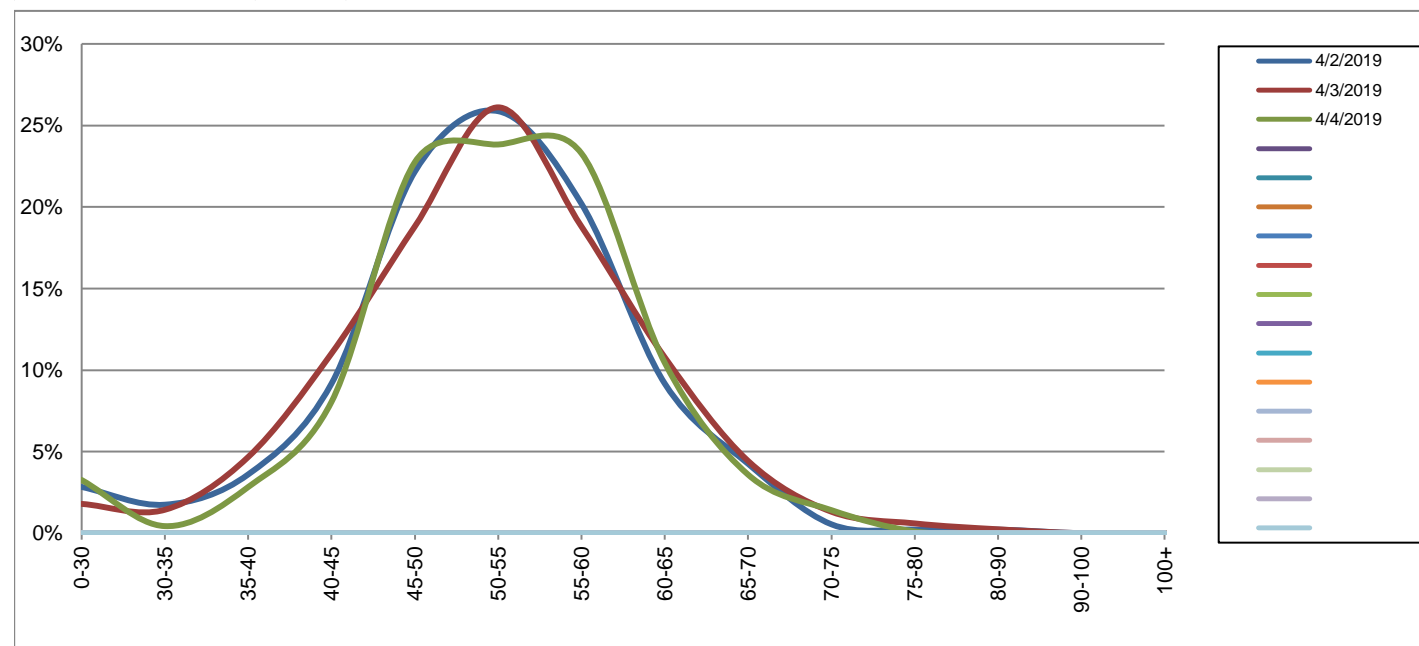
Eastbound

April 2, 2019 to April 4, 2019

Daily Speed Bin Percentages															Daily Speed Bin Volumes														Total	Avg.
Bin #	1	2	3	4	5	6	7	8	9	10	11	12	13	14	1	2	3	4	5	6	7	8	9	10	11	12	13	14	Volume	Speed
Bin Speeds	0-30	30-35	35-40	40-45	45-50	50-55	55-60	60-65	65-70	70-75	75-80	80-90	90-100	100+	0-30	30-35	35-40	40-45	45-50	50-55	55-60	60-65	65-70	70-75	75-80	80-90	90-100	100+		
4/2/2019	2.8%	1.7%	3.6%	9.2%	22.2%	25.9%	20.2%	9.2%	4.3%	0.5%	0.2%	0.2%	0.0%	0.0%	26	16	33	84	203	237	185	84	39	5	2	2	0	0	916	51
4/3/2019	1.8%	1.4%	4.7%	11.0%	18.8%	26.1%	18.8%	10.8%	4.4%	1.3%	0.6%	0.2%	0.0%	0.0%	15	12	39	92	157	218	157	90	37	11	5	2	0	0	835	52
4/4/2019	3.3%	0.4%	2.8%	8.1%	22.7%	23.8%	23.3%	10.4%	3.6%	1.4%	0.1%	0.0%	0.0%	0.0%	30	4	26	74	209	219	214	96	33	13	1	0	0	0	919	52
<b>Total</b>	2.7%	1.2%	3.7%	9.4%	21.3%	25.2%	20.8%	10.1%	4.1%	1.1%	0.3%	0.1%	0.0%	0.0%	71	32	98	250	569	674	556	270	109	29	8	4	0	0	2670	52

**Speed Data Summary**

Bin #	1	2	3	4	5	6	7	8	9	10	11	12	13	14	Total
Bin Speeds	0-30	30-35	35-40	40-45	45-50	50-55	55-60	60-65	65-70	70-75	75-80	80-90	90-100	100+	
Survey Total	71	32	98	250	569	674	556	270	109	29	8	4	0	0	2670
% Total	2.7%	1.2%	3.7%	9.4%	21.3%	25.2%	20.8%	10.1%	4.1%	1.1%	0.3%	0.1%	0.0%	0.0%	100%
Accumulated %	2.7%	3.9%	7.5%	16.9%	38.2%	63.4%	84.3%	94.4%	98.5%	99.6%	99.9%	100.0%	100.0%	100%	
Inverse Accum. %	97.3%	96.1%	92.5%	83.1%	61.8%	36.6%	15.7%	5.6%	1.5%	0.4%	0.1%	0.0%	0.0%	0.0%	
Average Speed	52 KM/H														



Site notes:

**Brookleigh Rd between Oldfield Rd and Hamsterly Rd**

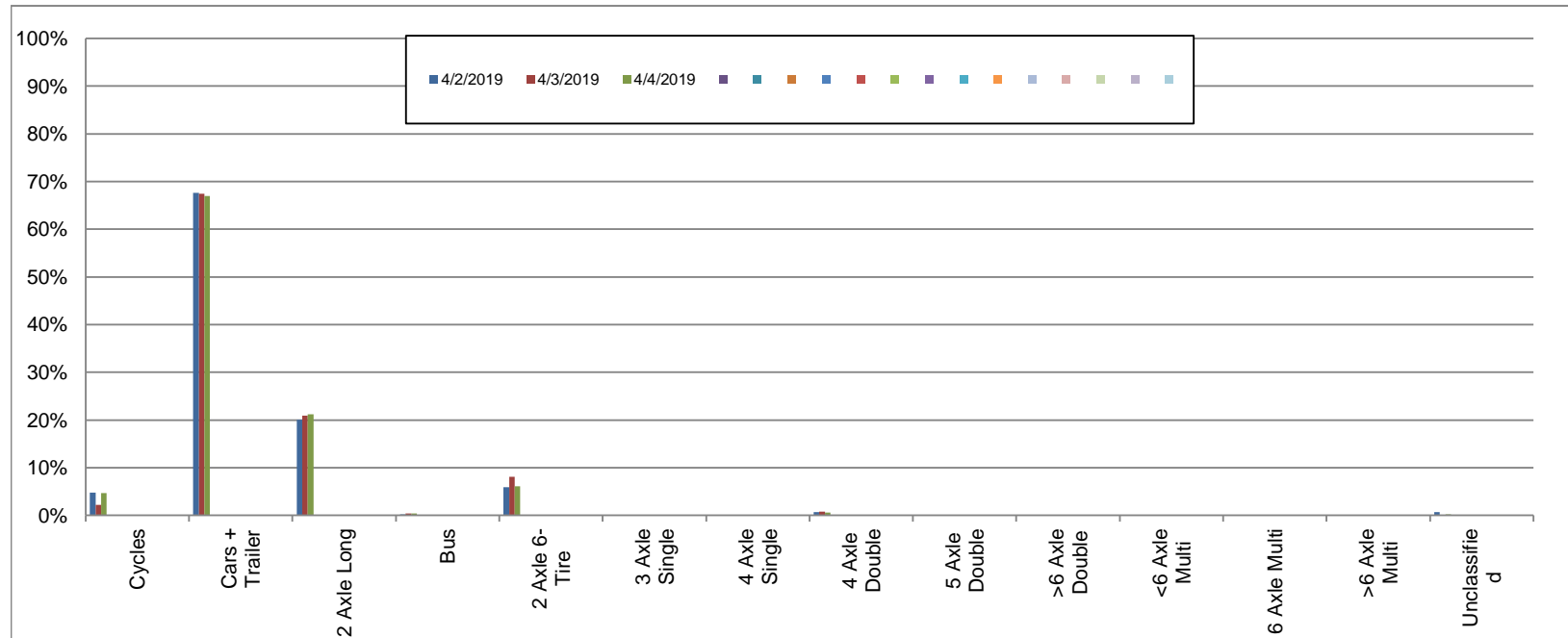
Westbound

April 2, 2019 to April 4, 2019

Daily Class Bin Percentages															Daily Class Bin Volumes														
Bin #	1	2	3	4	5	6	7	8	9	10	11	12	13	14	1	2	3	4	5	6	7	8	9	10	11	12	13	14	Total Volume
Bin Class	Cycles	Cars + Trailer	2 Axle Long	Bus	2 Axle 6-Tire	3 Axle Single	4 Axle Single	4 Axle Double	5 Axle Double	>6 Axle Double	<6 Axle Multi	6 Axle Multi	>6 Axle Multi	Unclassified	Cycles	Cars + Trailer	2 Axle Long	Bus	2 Axle 6-Tire	3 Axle Single	4 Axle Single	4 Axle Double	5 Axle Double	>6 Axle Double	<6 Axle Multi	6 Axle Multi	>6 Axle Multi	Unclassified	
4/2/2019	4.8%	67.6%	20.1%	0.2%	5.9%	0.0%	0.1%	0.7%	0.0%	0.0%	0.0%	0.0%	0.0%	0.7%	50	707	210	2	62	0	1	7	0	0	0	0	0	7	1046
4/3/2019	2.2%	67.5%	20.9%	0.4%	8.0%	0.1%	0.0%	0.8%	0.0%	0.0%	0.0%	0.0%	0.0%	0.0%	20	612	190	4	73	1	0	7	0	0	0	0	0	0	907
4/4/2019	4.6%	66.9%	21.2%	0.4%	6.1%	0.0%	0.0%	0.6%	0.0%	0.0%	0.0%	0.0%	0.0%	0.2%	50	721	228	4	66	0	0	6	0	0	0	0	0	2	1077
<b>Total</b>	<b>4.0%</b>	<b>67.3%</b>	<b>20.7%</b>	<b>0.3%</b>	<b>6.6%</b>	<b>0.0%</b>	<b>0.0%</b>	<b>0.7%</b>	<b>0.0%</b>	<b>0.0%</b>	<b>0.0%</b>	<b>0.0%</b>	<b>0.0%</b>	<b>0.3%</b>	<b>120</b>	<b>2040</b>	<b>628</b>	<b>10</b>	<b>201</b>	<b>1</b>	<b>1</b>	<b>20</b>	<b>0</b>	<b>0</b>	<b>0</b>	<b>0</b>	<b>0</b>	<b>9</b>	<b>3030</b>

**Class Data Summary**

Bin #	1	2	3	4	5	6	7	8	9	10	11	12	13	14	Total Volume
Bin Class	Cycles	Cars + Trailer	2 Axle Long	Bus	2 Axle 6-Tire	3 Axle Single	4 Axle Single	4 Axle Double	5 Axle Double	>6 Axle Double	<6 Axle Multi	6 Axle Multi	>6 Axle Multi	Unclassified	Total Volume
<b>Survey Total</b>	120	2040	628	10	201	1	1	20	0	0	0	0	0	9	3030
<b>% Total</b>	4.0%	67.3%	20.7%	0.3%	6.6%	0.0%	0.0%	0.7%	0.0%	0.0%	0.0%	0.0%	0.0%	0.3%	100%
<b>Accumulated %</b>	4.0%	71.3%	92.0%	92.3%	99.0%	99.0%	99.0%	99.7%	99.7%	99.7%	99.7%	99.7%	99.7%	100.0%	
<b>Inv. Accum. %</b>	96.0%	28.7%	8.0%	7.7%	1.0%	1.0%	1.0%	0.3%	0.3%	0.3%	0.3%	0.3%	0.3%	0.0%	



**Classification Descriptions**

Bin #	Bin Description
1	Motorcycles
2	Passenger cars, including those with recreational trailers
3	2-axle pick-ups, vans, and RVs, including those with recreational trailers
4	Buses
5	2-axle, 6-tire single units
6	3-axle single units
7	4-axle single units
8	3-axle or 4-axle double unit
9	5-axle double unit
10	6-, 7-, or 8-axle double unit
11	5-axle multiple unit
12	6-axle multiple unit
13	7-or-more-axle multiple unit
14	Vehicles that could not be classified

Site notes:



**Brookleigh Rd between Oldfield Rd and Hamsterly Rd**

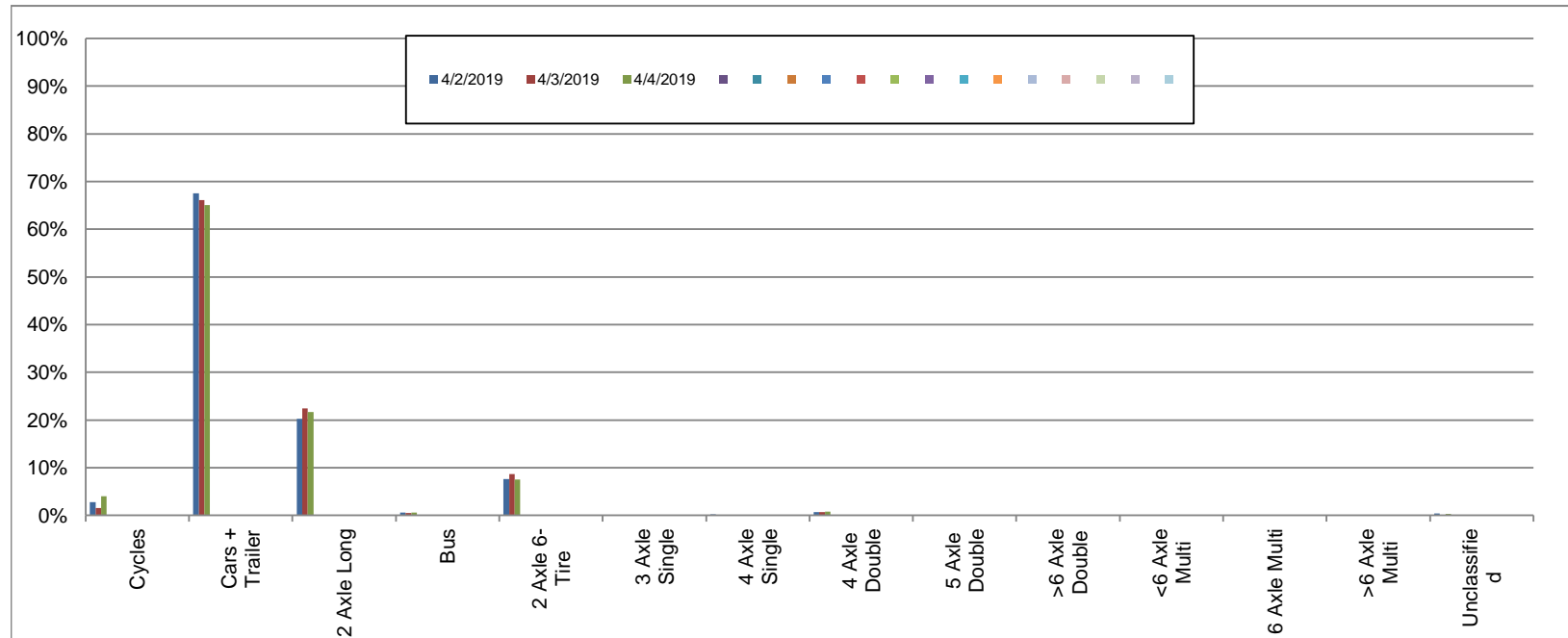
Eastbound

April 2, 2019 to April 4, 2019

Daily Class Bin Percentages															Daily Class Bin Volumes														
Bin #	1	2	3	4	5	6	7	8	9	10	11	12	13	14	1	2	3	4	5	6	7	8	9	10	11	12	13	14	Total Volume
Bin Class	Cycles	Cars + Trailer	2 Axle Long	Bus	2 Axle 6-Tire	3 Axle Single	4 Axle Single	4 Axle Double	5 Axle Double	>6 Axle Double	<6 Axle Multi	6 Axle Multi	>6 Axle Multi	Unclassified	Cycles	Cars + Trailer	2 Axle Long	Bus	2 Axle 6-Tire	3 Axle Single	4 Axle Single	4 Axle Double	5 Axle Double	>6 Axle Double	<6 Axle Multi	6 Axle Multi	>6 Axle Multi	Unclassified	
4/2/2019	2.7%	67.6%	20.2%	0.5%	7.6%	0.0%	0.2%	0.7%	0.0%	0.0%	0.0%	0.0%	0.0%	0.4%	25	619	185	5	70	0	2	6	0	0	0	0	0	4	916
4/3/2019	1.6%	66.1%	22.4%	0.5%	8.6%	0.1%	0.0%	0.7%	0.0%	0.0%	0.0%	0.0%	0.0%	0.0%	13	552	187	4	72	1	0	6	0	0	0	0	0	0	835
4/4/2019	4.0%	65.1%	21.7%	0.5%	7.5%	0.1%	0.0%	0.8%	0.0%	0.0%	0.0%	0.0%	0.0%	0.3%	37	598	199	5	69	1	0	7	0	0	0	0	0	3	919
<b>Total</b>	<b>2.8%</b>	<b>66.3%</b>	<b>21.4%</b>	<b>0.5%</b>	<b>7.9%</b>	<b>0.1%</b>	<b>0.1%</b>	<b>0.7%</b>	<b>0.0%</b>	<b>0.0%</b>	<b>0.0%</b>	<b>0.0%</b>	<b>0.0%</b>	<b>0.3%</b>	<b>75</b>	<b>1769</b>	<b>571</b>	<b>14</b>	<b>211</b>	<b>2</b>	<b>2</b>	<b>19</b>	<b>0</b>	<b>0</b>	<b>0</b>	<b>0</b>	<b>0</b>	<b>7</b>	<b>2670</b>

**Class Data Summary**

Bin #	1	2	3	4	5	6	7	8	9	10	11	12	13	14	Total Volume
Bin Class	Cycles	Cars + Trailer	2 Axle Long	Bus	2 Axle 6-Tire	3 Axle Single	4 Axle Single	4 Axle Double	5 Axle Double	>6 Axle Double	<6 Axle Multi	6 Axle Multi	>6 Axle Multi	Unclassified	Total Volume
<b>Survey Total</b>	75	1769	571	14	211	2	2	19	0	0	0	0	0	7	2670
<b>% Total</b>	2.8%	66.3%	21.4%	0.5%	7.9%	0.1%	0.1%	0.7%	0.0%	0.0%	0.0%	0.0%	0.0%	0.3%	100%
<b>Accumulated %</b>	2.8%	69.1%	90.4%	91.0%	98.9%	99.0%	99.0%	99.7%	99.7%	99.7%	99.7%	99.7%	99.7%	100.0%	
<b>Inv. Accum. %</b>	97.2%	30.9%	9.6%	9.0%	1.1%	1.0%	1.0%	0.3%	0.3%	0.3%	0.3%	0.3%	0.3%	0.0%	



**Classification Descriptions**

Bin #	Bin Description
1	Motorcycles
2	Passenger cars, including those with recreational trailers
3	2-axle pick-ups, vans, and RVs, including those with recreational trailers
4	Buses
5	2-axle, 6-tire single units
6	3-axle single units
7	4-axle single units
8	3-axle or 4-axle double unit
9	5-axle double unit
10	6-, 7-, or 8-axle double unit
11	5-axle multiple unit
12	6-axle multiple unit
13	7-or-more-axle multiple unit
14	Vehicles that could not be classified

Site notes: